



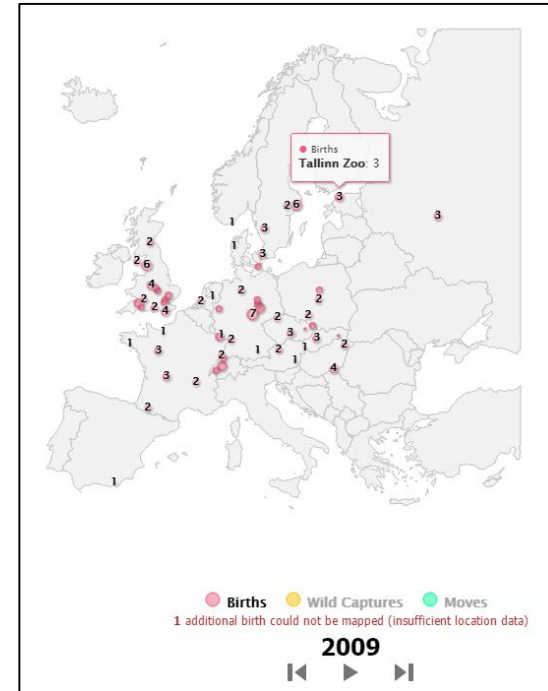
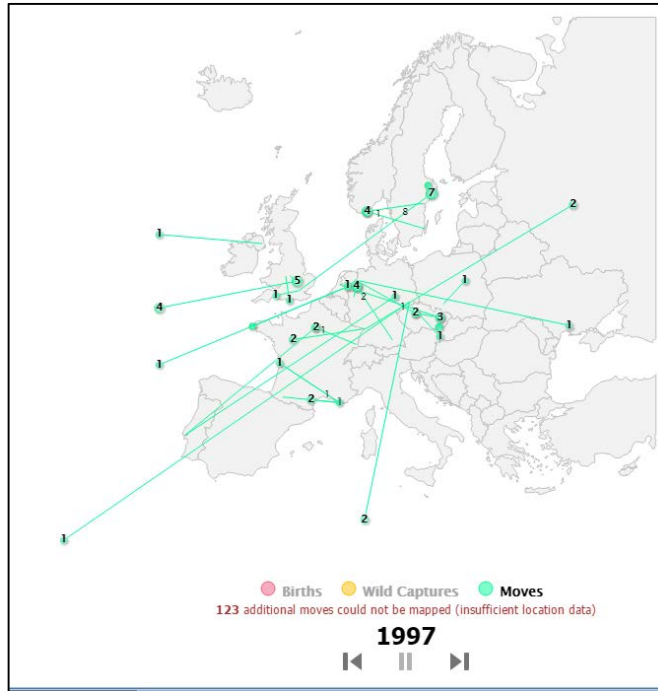
Research Partner Program Overview

For Researchers

- ZIMS access is at the Read Only level
- The role has access to:
 - Husbandry Related:
 - Species Event History
 - Species Holding
 - Age Distribution
 - Weight Comparison Report
 - TAG Export
 - Population Overview
 - Pedigree Explorer
 - Medical Related
 - Anesthesia Summaries
 - Drug Usage Extracts
 - Expected Test Results

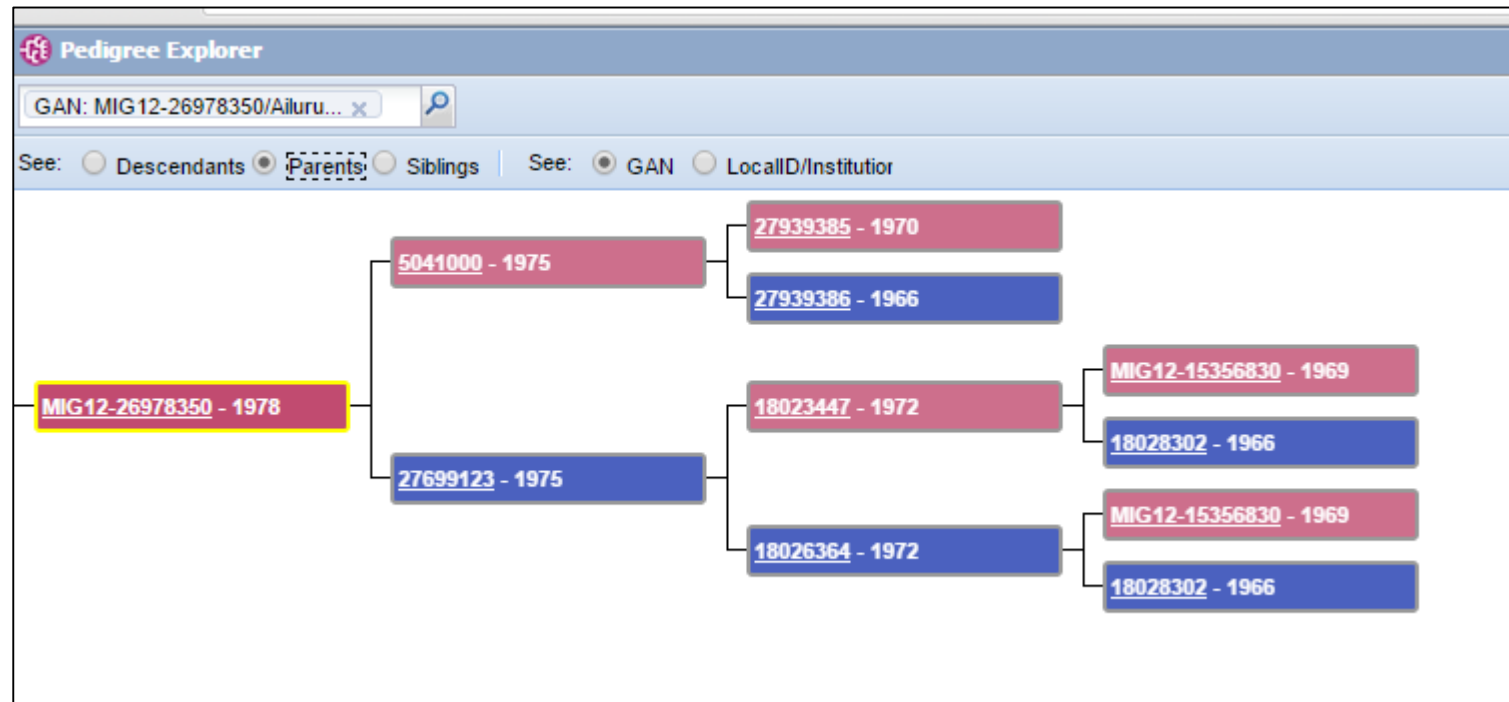


Reports - Species Event History



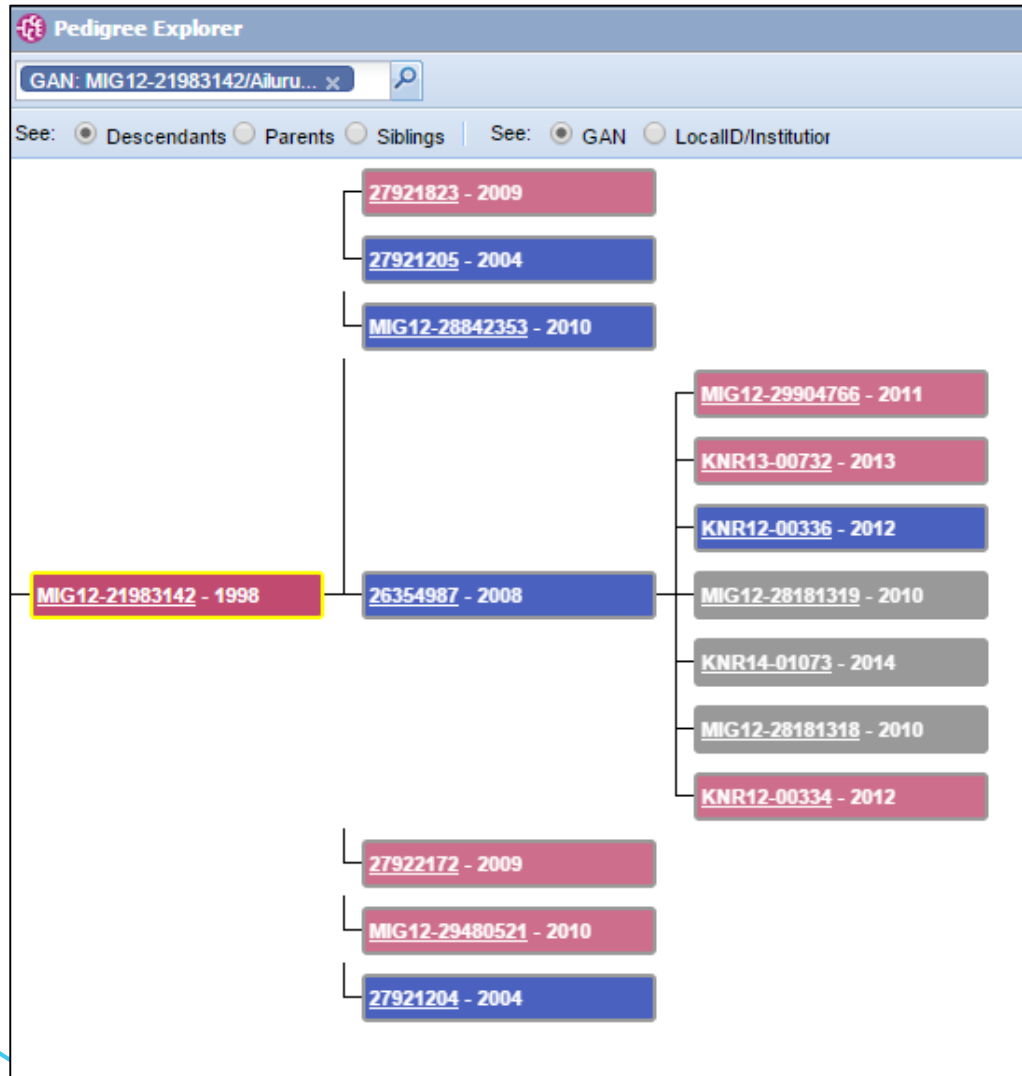
The Species Event History is a video displaying all the Births, Wild Captures and moves of a species. This can be run at several levels from Global to Association. The video can be stopped and restarted or fast forward and fast backward. Hovering over will display the institution name.

Tools – Pedigree Explorer (Parents)



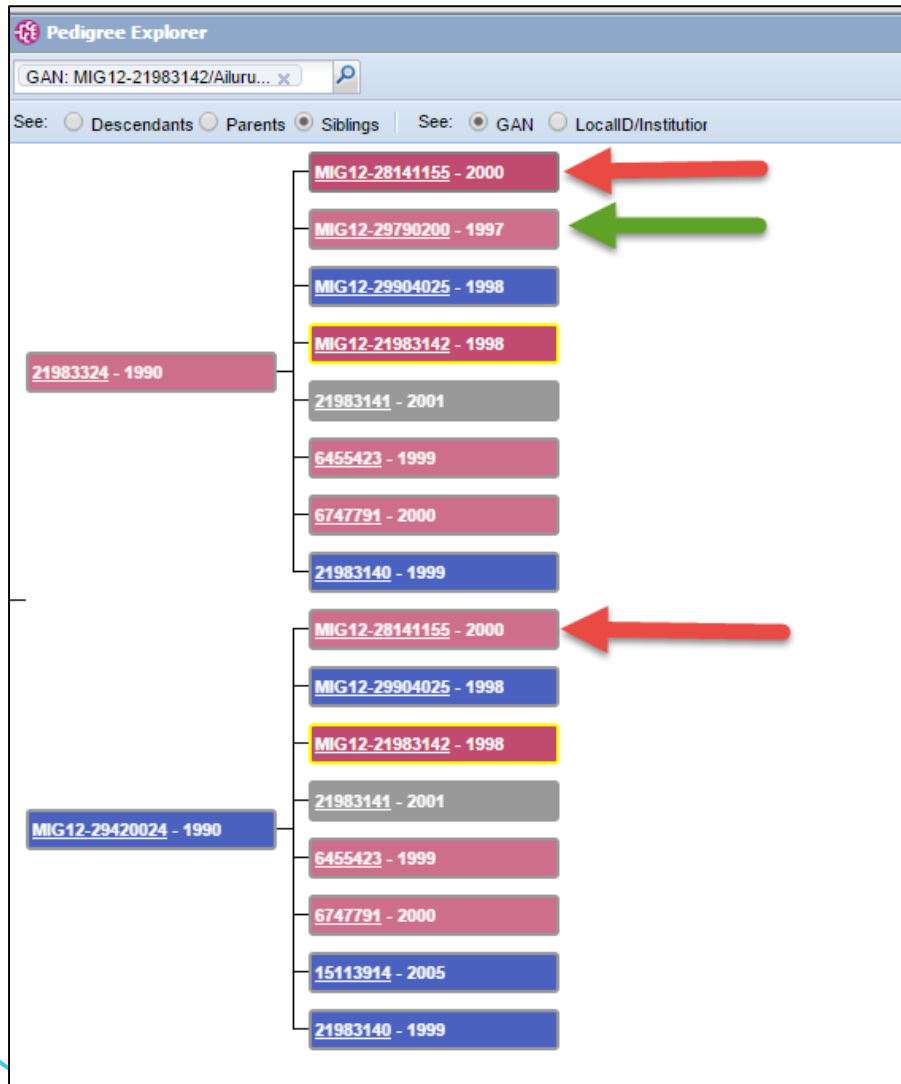
Pedigree Explorer allows you to find Parents, Descendants and Siblings for a specific animal. The graph above is for Parents and this animal can be traced back to its grandparents on its mother's side and its great-grandparents on its father's side. Females are in pink, males are in blue and undetermined sexes are in grey.

Tools - Pedigree Explorer (Descendants)



This animal has produced seven offspring. One of these offspring produced another seven grand offspring.

Pedigree Explorer (Siblings)



Siblings are displayed as offspring under both parents. If they are found under both parents (red arrows here) they are full siblings. If they are found under only one parent (green arrow here) they are half siblings.

Species Holding

Species Holding Sunset Zoo

Taxonomy
Oryx leucoryx/Arabian oryx x

Global Continent Country Association My Institution

Association *:
oo and Aquarium Association (AZAA)

Show subtaxa separately

IUCN
Vulnerable (VU)

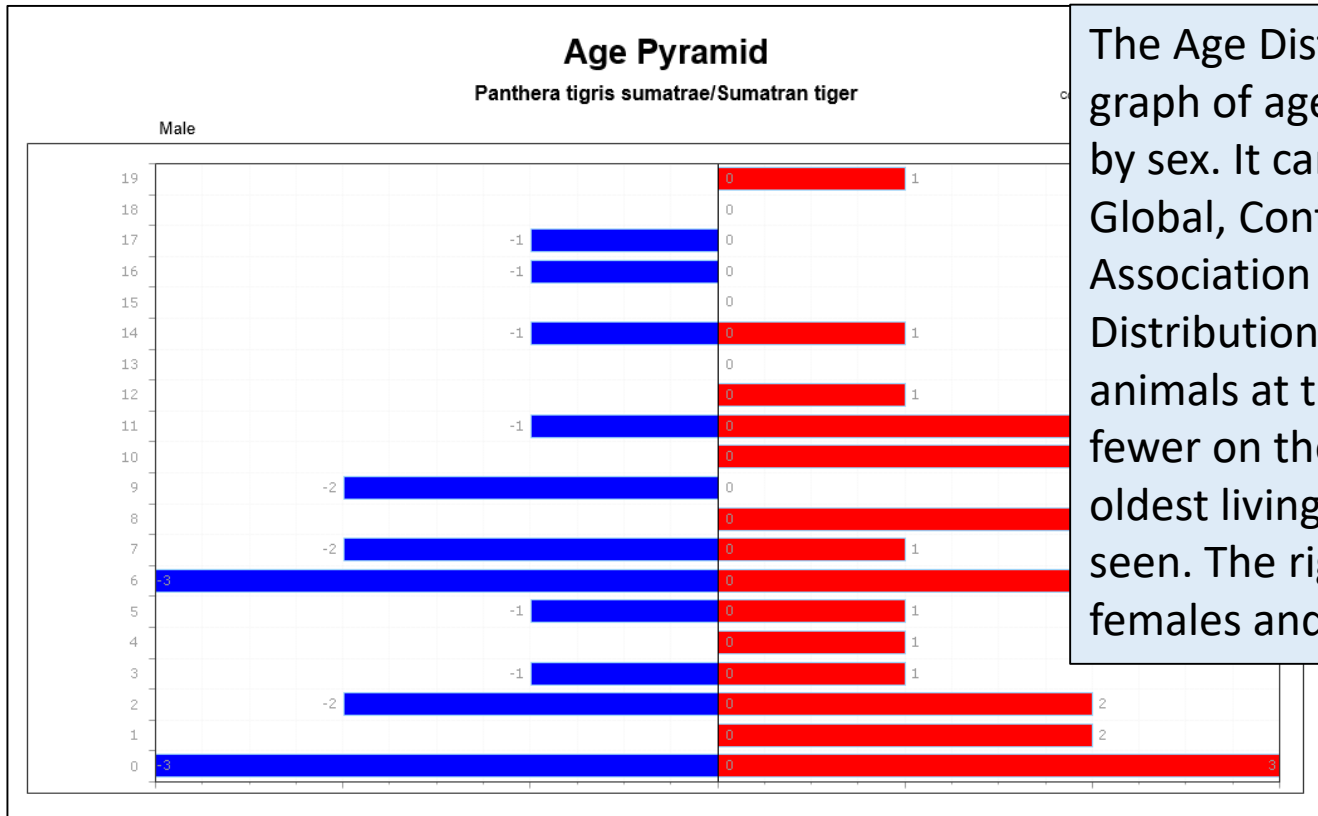
Run report

Species holding report for: Oryx leucoryx / Arabian oryx
Association: Arabian Zoo and Aquarium Association (AZAA)

All 5 Institutions, 1 Regions								
	194	333	1	47	0	0	0	528
Species: Oryx leucoryx / Arabian oryx								
All 5 Institutions, 1 Regions								
	194	333	1	47	0	0	0	528
Institution	Male	Female	Other	Birth (last 12 months)	Group M.	Group F.	Group O.	Total
Region: Asia 5 Institutions, Male: 194, Female: 333, Other: 1								
AL AIN / Al Ain Zoo	79	107	0	43	0	0	0	186
AL WABRA / Al-Wabra Wildlife Pres...	15	22	0	2	0	0	0	37
ALBUSTAN / Al Bustan Zoological C...	2	3	1	2	0	0	0	6
MAKTOUM / Maktoum Wildlife Centre	8	16	0	0	0	0	0	24
SAFA WILD / Wadi Al Safa Wildlife...	90	185	0	0	0	0	0	275

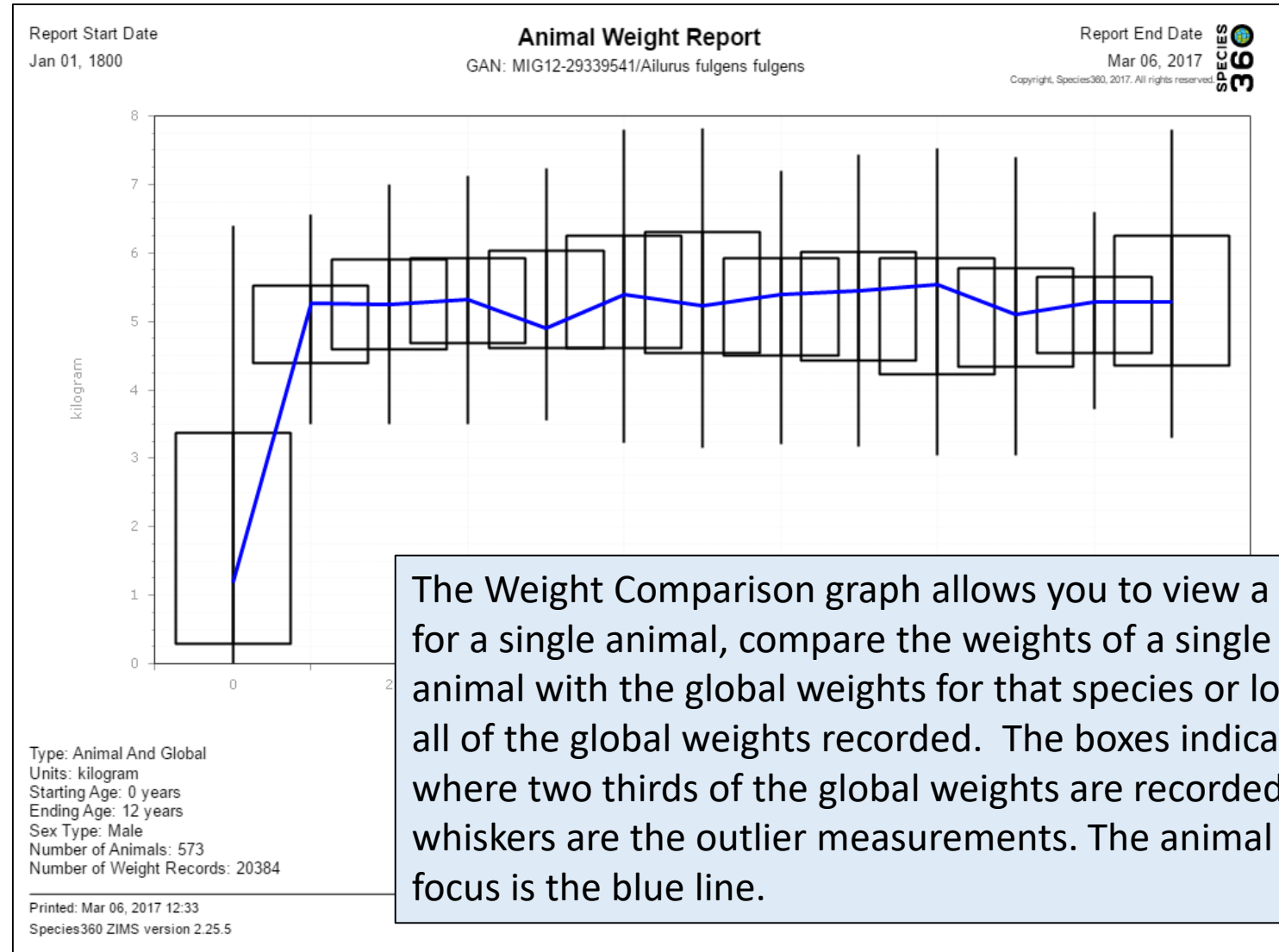
Species Holdings allows you to look for institutions currently holding specific species. The search can be filtered by Global, Continent, Country or Association. The institutions are hyperlinks to their institution page so you can gather information on them. The animal numbers are also hyperlinks that will allow you to view the global record of each animal.

Age Distribution



The Age Distribution report is a graph of ages of living animals by sex. It can be run at the Global, Continent, Country or Association level. A good Age Distribution has a lot of young animals at the bottom and fewer on the top. The age of the oldest living animal can also be seen. The right side represents females and the left side males.

Weight Comparison



TAG Export

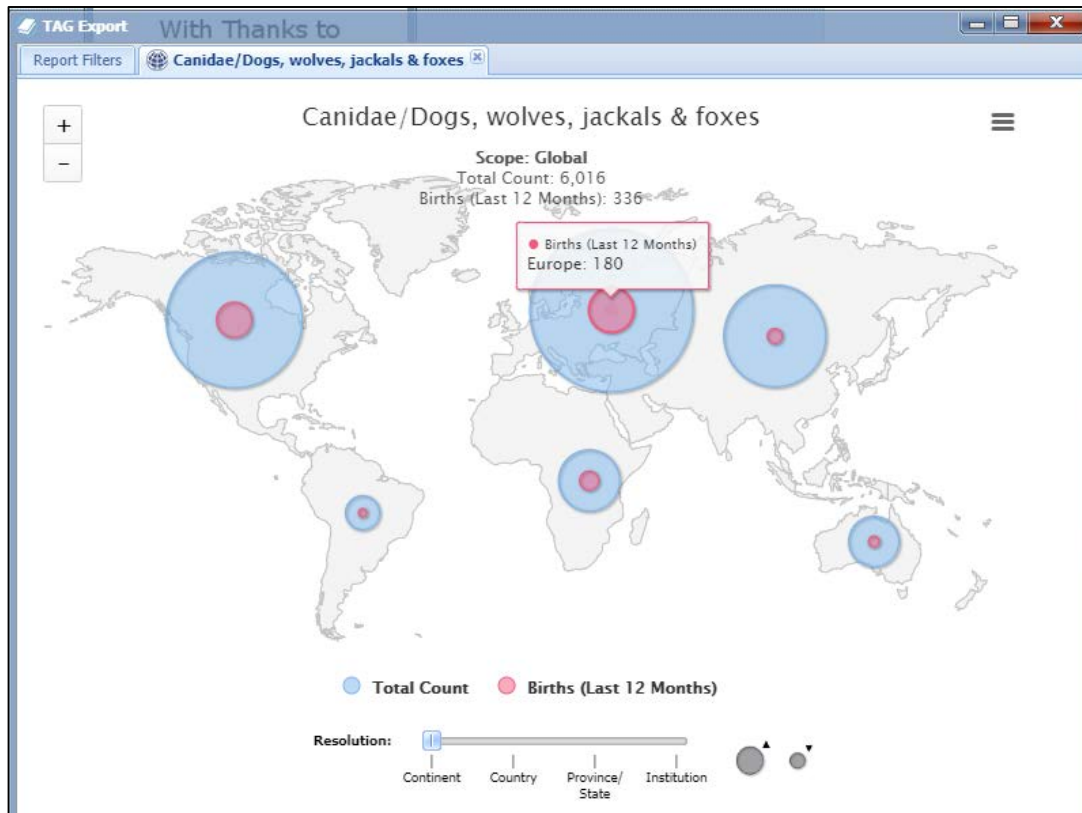
	A	B	C	D	E	F	G
1	IUCN	Total # Taxa	% by Category	# Taxa Held	% of Collection Taxa	# Of Animals	% of Collection Animals
2	Extinct (EX)	1	0.2	0	0	0	0
3	Critically Endangered (CR)	5	0.8	2	1.7	148	3.1
4	Endangered (EN)	13	2.2	6	5.2	786	16.4
5	Vulnerable (VU)	1	0.2	1	0.9	148	3.1
6	Near Threatened (NT)	13	2.2	4	3.5	385	8
7	Least Concern (LC)	184	31.2	74	64.3	3199	66.8
8	Data Deficient (DD)	1	0.2	0	0	0	0
9	-	371	63	28	24.3	126	2.6
10	Copyright, ISIS, 2014. All rights reserved.						
11							
12							
13							
14							
15							
16							
17							
18							
19							
20							
21							
22							
23							
24							

This report offers current physical holdings of Species360 member institutions in a downloadable spreadsheet. It is intended to help support strategic collection planning, such as that done by various Association Taxon Advisory Groups. It can be run at the Global, Continent, Country and Association level. It is exported to Raw Excel so the data can be manipulated. The first tab is the Raw Data, the second tab shows the IUCN summary for the taxonomy.



Global information serving conservation.

TAG Export

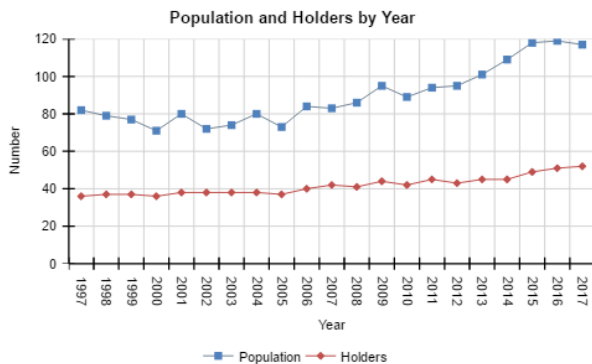
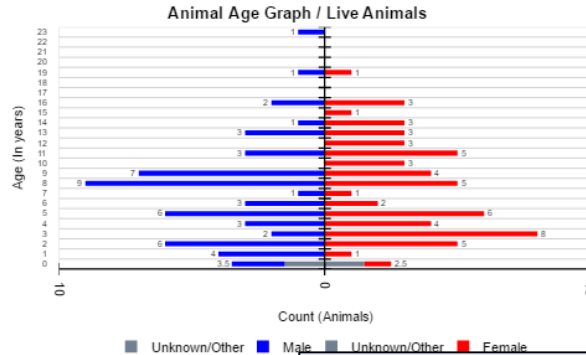
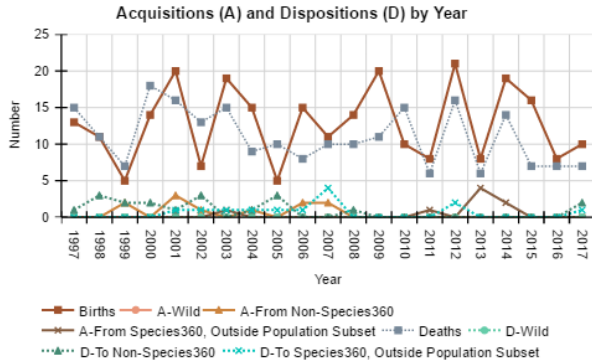


You can select to View in Map. This map displays the regions and the births during the last year as well as the total counts.

Population Overview

Population Overview Report

for *Panthera tigris sumatrae* / Sumatran tiger IUCN: Critically Endangered (CR) CITES: I
 From: 06 Mar 1997 to 06 Mar 2017 | Population Subst: 476 ISIS Members From Europe



Population Data and

Individuals	
Living Individuals	
Contributing Founders	
Living Individuals	
Living Descendants (from Founders)	
Living Breeders	
Living Captive Born	
Living Wild Born	
% Marked Hybrid	
% Ancestry Includes Inconsistent Taxonomy	
% Pedigree Known	
% Pedigree Certain	
Living and Historical Individuals	
% Estimated Birth Dates (> One Month)	
% Unknown Date of Birth	
% Individually Identified Sires and Dams	
% Individuals with Multiple Sires or Dams	
% MULT Parents without Identification	
% Animals without Recorded Birth or Cap	
% Animals Lost to Follow Up	
Groups	
Living Animals in Groups	
Current Founder Groups	
Number of Current Groups	
% Pedigree Known	
% Pedigree Certain	

The Population Overview report is a one-screen per taxon overview of the state of the animal population, including key metrics on genetics and demographics, and indicators of the underlying data quality. This report can be run at the Global, Continent, Country and Association level.

Disclaimer: These tables and figures are based on institutional data submitted to Species360, not studbook data.

Printed: Mar 06, 2017 12:21

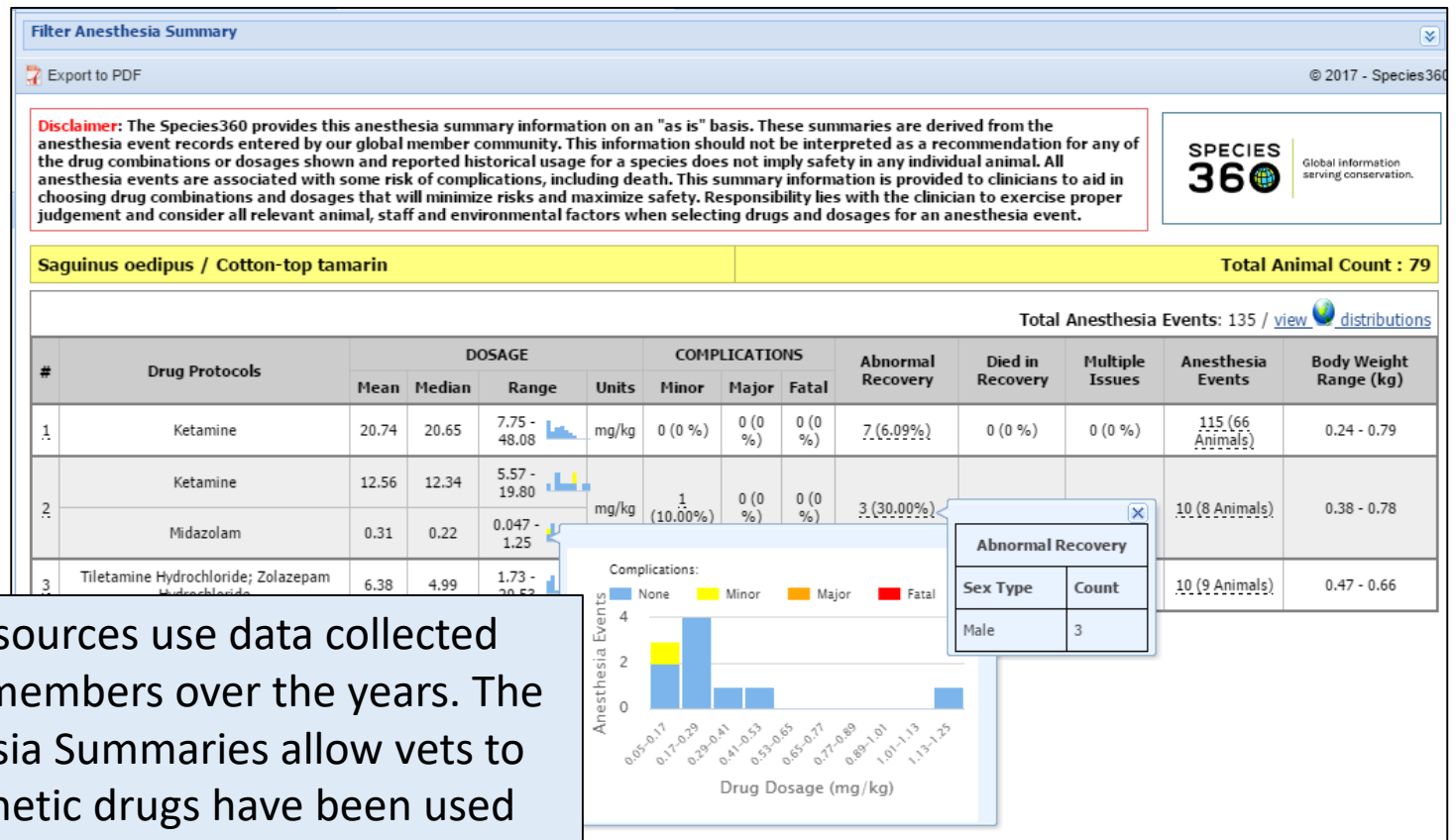
Canadian Accredited Zoos and Aquariums (CAZA)

Species360 ZIMS version 2.25.5



Global information serving conservation.

Anesthesia Summaries



The Medical Resources use data collected By Species360 members over the years. The Global Anesthesia Summaries allow vets to see what anesthetic drugs have been used for specific species and if there were any complications associated.

Drug Usage Extract

Global ZIMS Statistics Search Results Search Results

Active Ingredient(s)	Species Level Summary	Prescription Count	Genus Level Summary	Prescription Count
Ivermectin	Saguinus oedipus / Cotton-top tamarin	606 View	Saguinus / Tamarin	1158 View
Fenbendazole	Saguinus oedipus / Cotton-top tamarin	242 View	Saguinus / Tamarin	537 View
Pyrantel	Saguinus oedipus / Cotton-top tamarin	25 View	Saguinus / Tamarin	58 View
Mebendazole	Saguinus oedipus / Cotton-top tamarin	24 View	Saguinus / Tamarin	32 View
Albendazole	Saguinus oedipus / Cotton-top tamarin	18 View	Saguinus / Tamarin	37 View

Species Level Extract (see Genus Level Extracts based on 32 records)

Saguinus oedipus / Cotton-top tamarin **Mebendazole/(Anthelmintic)**

Route: Oral (p.o.) Total Records: 18 / [view](#) [distributions](#)

Frequency	Dosage (mg/kg)			Duration (days)		Adverse Reactions			Useable Records	Animals	Terminated Early
	Mean	Median	Range	Median	Range	Minor	Major	Fatal			
once a day (sid)	55.54	52.27	49.92 - 70.68						18	5	0

Individual records with insufficient counts for statistical analysis

Route	Record Count
Oral (p.o.)	6 (view records)

Adverse Reactions:

Legend: None (blue), Minor (yellow), Major (orange), Fatal (red)

The Drug Usage Extract allows vets to find various drugs used on specific species. Selecting the View hyper-link will take you to details regarding the usage.



Global information serving conservation.

Expected Test Results – Blood References

Global ZIMS Statistics | Search Results | **Acinonyx jubatus / Cheetah** | © 2018 - Species360

Export to PDF

Expected Results Filter

Type of Result

- All Results
- Global Reference Intervals
- Local Reference Intervals
- Small Data Set Tests only

Sex Type

- All Combined
- Females only
- Males only

Restrainer Type

- All Combined
- Physical only
- Chemical only
- Behavioral only

Age Grouping

- All Combined

Sample Type

Please Select

Specified Tests

Measurement System

- Standard International (SI)
- Conventional US

Hematology | Toxicology | Chemistry/Fluid Analysis | Immunology/Serology | Endocrinology/Reproduction

Expected Result Type	Test	Units	Reference Interval	Mean	Median	Lowest Data Value	Highest Data Value	Sample Size	Sample Size	Sample Size
Global sp RI	Red Blood Cell count (automated)	*10 ¹² cells/L	4.97 - 9.27	7.18	7.20	2.47	11.86	3012		
Global sp RI	Red Blood Cell count (manual)	*10 ¹² cells/L	4.98 - 9.44	7.20	7.04	4.28	11.10	283		
Global sp RI	Hemoglobin (automated)	g/L	89 - 168	131	131	42	224	339		
Global sp RI	Hematocrit (automated)	ratio	0.270 - 0.540	0.403	0.400	0.148	0.701	3107		
Global sp RI	Hematocrit (manual)	ratio	0.280 - 0.530	0.404	0.406	0.170	0.639	1004	399	Whole Blood
Global sp RI	Mean Corpuscular Volume (reported)	fL	46.3 - 67.5	57.2	57.4	42.0	72.0	826	319	Whole Blood
Global sp RI	Mean Corpuscular Volume (calculated)	fL	45.5 - 66.7	55.9	55.8	35.3	74.3	2444	545	Whole Blood
Global sp RI	Mean Corpuscular Hemoglobin (reported)	fmol	0.91 - 1.32	1.14	1.14	0.77	1.49	648	280	Whole Blood
Global sp RI	Mean Corpuscular Hemoglobin (calculated)	pg	15.2 - 21.1	18.2	18.3	12.3	24.3	2515	564	Whole Blood
Global sp RI	Mean Corpuscular Hemoglobin Concentration (reported)	g/L	275 - 370	319	315	192	430	715	290	Whole Blood
Global sp RI	Mean Corpuscular Hemoglobin Concentration (calculated)	g/L	285 - 367	327	327	231	421	2622	567	Whole Blood
Global sp RI	Red Cell Distribution Width (automated)	%	14.1 - 26.4	20.0	19.7	12.7	31.6	437	169	Whole Blood
Global sp RI	Nucleated Red Blood Cells (automated)	/100 WBC	0 - 4	1	1	0	8	456	238	Whole Blood
Global sp RI	Nucleated Red Blood Cells (manual)	/100 WBC	0 - 4	1	1	0	4	53	37	Whole Blood
Global sp RI	Reticulocyte percentage (automated)	%	0.1 - 1.7	0.7	0.6	0.1	1.7	46	37	Whole Blood
Global sp RI	Reticulocyte percentage (manual)	%	0.0 - 2.7	0.7	0.6	0.0	3.2	68	46	Whole Blood
Basic Stats	Reticulocyte absolute count (automated)	*10 ⁹ cells/L	N/A - N/A	39.570	29.100	0.015	110.000	37	29	Whole Blood
Global sp RI	Platelet count (automated)	*10 ¹² cells/L	0.143 - 0.726	0.384	0.362	0.008	0.976	1792	482	Whole Blood

The expected tests results allow searching by species and global reference tests. The results display blood test results from healthy animals – a “normal” Health Status.



Global information serving conservation.

Research Partner Program

